

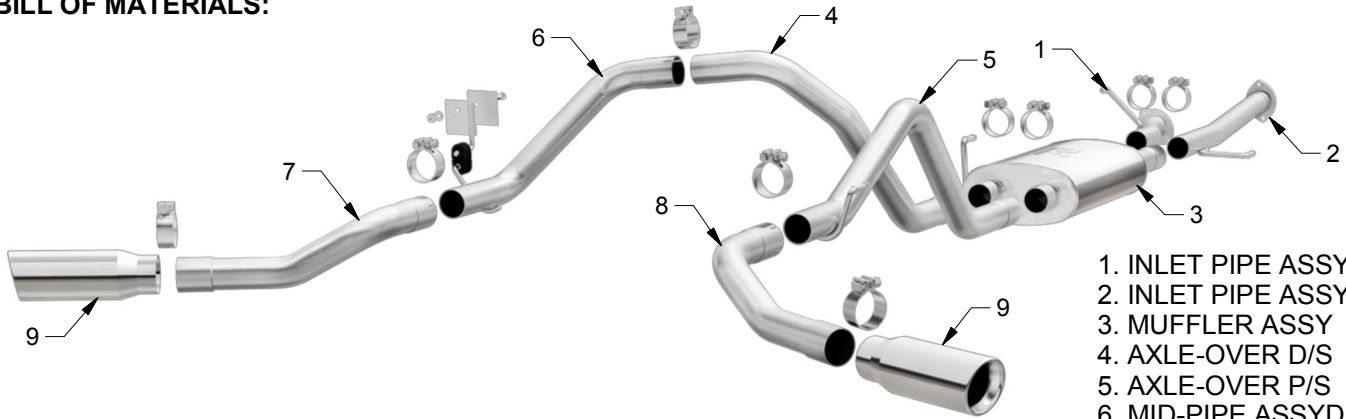


# INSTALLATION INSTRUCTIONS



'10-'15 TOYOTA TUNDRA 4.6/5.7L | PART NO. 19232

## BILL OF MATERIALS:



- 1. INLET PIPE ASSY D/S
- 2. INLET PIPE ASSY P/S
- 3. MUFFLER ASSY
- 4. AXLE-OVER D/S
- 5. AXLE-OVER P/S
- 6. MID-PIPE ASSYD/S
- 7. TAIL PIPE D/S
- 8. TAIL PIPE P/S
- 9. [2] 4IN. TIPS



WEAR SAFETY GLASSES



READ INSTRUCTIONS THOROUGHLY BEFORE INSTALLING PRODUCT

## SHOP SUPPLIES:



SPRAY LUBRICANT

To ease removal of existing exhaust components (especially on older vehicles) spray penetrating lubricant on all fasteners and hangers/insulators that will be loosened or removed and let soak before disassembly.

## HARDWARE KIT:

- 1. [7] 2.50" Torca Clamp
- 2. [2] 2.75" Torca Clamp
- 3. [1] Rubber Insulator
- 4. [1] Hanger Bracket Assy.
- 5. [1] Bracket Plate
- 6. [1] Nut 3/8-16"
- 7. [1] Washer Flat 3/8"
- 8. [1] Bolt 3/8-16 x 1.25"

## MINIMUM REQUIRED TOOLS:



Hanger Tool (Or Pry Bar)



15mm, 14mm 9/16"

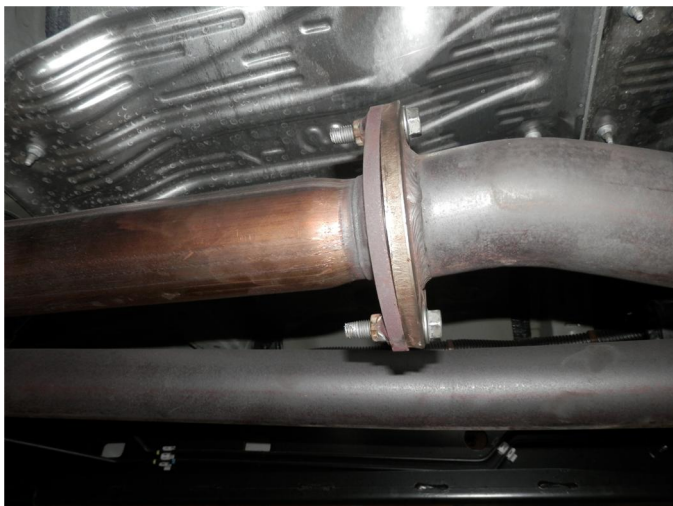
## MAGNAFLOW RECOMMENDS PROFESSIONAL INSTALLATION ON ALL THEIR PRODUCTS



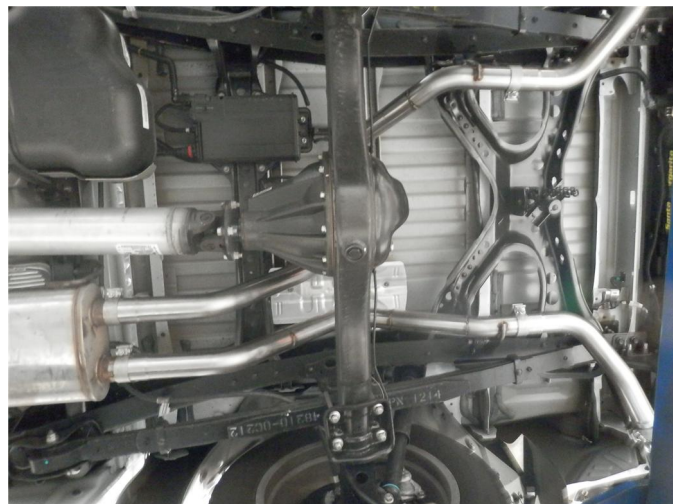
**WARNING:** When working on, under, or around any vehicle exercise caution. Please allow the vehicle's exhaust system to cool before removal, as exhaust system temperatures may cause severe burns. If working without a lift always consult vehicle manual for correct lifting specifications. Always wear safety glasses and ensure a safe work area. Serious injury or death could occur if safety measures are not followed.

**ATTENTION:** Always install any supplied band or U-bolt clamps to the proper torque specifications of 40-45 ft-lbs for band clamps and 30-35 ft-lbs for U-bolt clamps. Over tightening will result in the clamp breaking and will NOT be warranted by MagnaFlow.

## INSTALLATION INSTRUCTIONS



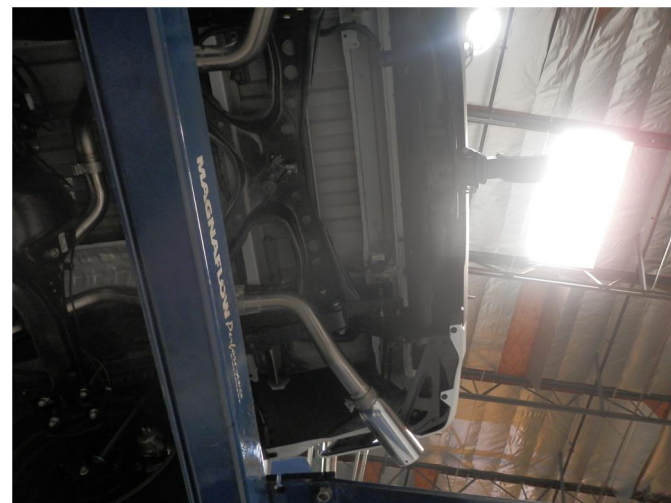
**Step 1.** To begin the removal of the OEM system you will need to remove the spare wheel. Next unbolt both inlet flanges at the OEM inlet pipe assembly. Working rearward (with the exhaust supported) extract the hangers from the rubber insulators and remove the OEM exhaust. Do not discard or damage the rubber insulators as they will be used to install the new exhaust system.



**Step 2.** Begin installing of the new system by attaching both of the Inlet Pipe Assemblies to the outlets of the OEM system using the OEM hardware. Next attach the Muffler Assembly to the inlet pipes with supplied clamps and insert the hangers into the rubber insulators. Keep all clamps loose for final adjustment of the system.



**Step 3.** Attach the supplied Hanger Bracket Assembly to the vehicles subframe using the Bracket Plate and supplied hardware. There is an existing hole in the subframe located on the drivers side. Loosely install both Inlet Pipes to the muffler Assembly using the supplied 2.50" clamps and engaging the welded hangers to the rubber insulators. Install the Mid Pipe Assembly in a similar fashion locating the welded hanger to the Hanger Bracket Assembly you previously installed using the supplied Rubber Insulator.



**Step 4.** Attach the Tail Pipes to the system using the supplied 2.50" clamps. Install the tips using a similar fashion with the supplied 2.75" clamps.



**Step 5.** Once a final position has been chosen for the new exhaust system, evenly tighten all clamps from front to rear using the torque specifications on page one of the instructions. Inspect all fasteners after 25-50 miles of operation and re-tighten if necessary.